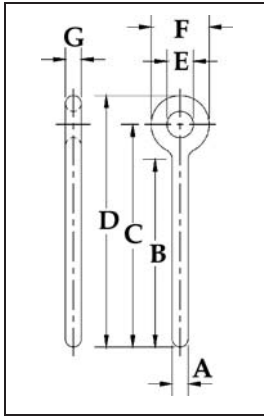


# Forged Rivet Eye Bolts



S-293

• Forged Steel — Quenched and Tempered.



## S-293 Rivet Eye Bolts

Shank Diameter & Length (mm)	S-293 Stock No.	Weight Per 100 (kg)	Dimensions (mm)						
			A	B	C	D	E	F	G
6.35 x 51.0	1043882	2.85	6.35	51.0	67.0	79.5	12.7	25.4	6.35
6.35 x 102	1043908	5.12	6.35	102	118	130	12.7	25.4	6.35
7.94 x 57.0	1043926	5.44	7.94	57.0	76.0	92.0	16.0	31.8	7.87
7.94 x 108	1043944	8.30	7.94	108	127	143	16.0	31.8	7.87
9.53 x 63.5	1043962	11.33	9.53	63.5	86.0	104	19.1	38.1	9.65
9.53 x 114	1043980	12.51	9.53	114	137	155	19.1	38.1	9.65
9.53 x 152	1044006	14.28	9.53	152	175	193	19.1	38.1	9.65
12.7 x 82.5	1044024	19.86	12.7	82.5	111	136	25.4	51.0	12.7
12.7 x 152	1044042	28.34	12.7	152	181	206	25.4	51.0	12.7
15.9 x 102	1044060	42.5	15.9	102	140	171	31.8	63.5	15.8
15.9 x 152	1044088	51.2	15.9	152	190	222	31.8	63.5	15.8
19.1 x 114	1044104	65.2	19.1	114	159	196	38.1	76.0	19.1
19.1 x 152	1044122	73.7	19.1	152	197	234	38.1	76.0	19.1
22.2 x 127	1044140	108	22.2	127	178	222	44.5	89.0	22.2
22.2 x 203	1044168	132	22.2	203	254	298	44.5	89.0	22.2
25.4 x 152	1044186	170	25.4	152	213	263	51.0	102	25.4
25.4 x 229	1044202	204	25.4	229	289	339	51.0	102	25.4
31.8 x 203	1044220	327	31.8	203	279	340	63.0	127	31.8
31.8 x 305	1044248	388	31.8	305	378	441	63.0	127	31.8

Rigging Accessories

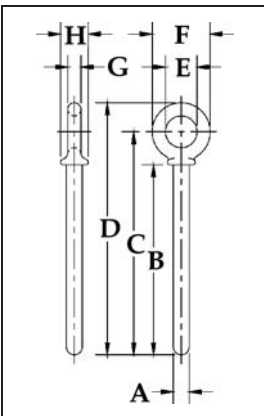


QUIC-CHECK®



S-276

• Forged Steel — Quenched and Tempered.



## S-276 Shoulder Rivet Eye Bolts

Shank Diameter & Length (mm)	S-276 Stock No.	Weight Per 100 (kg)	Dimensions (mm)							
			A	B	C	D	E	F	G	H
6.35 x 51.0	1045746	2.49	6.35	51.0	63.5	74.5	12.7	22.4	4.85	11.9
6.35 x 102	1045764	3.18	6.35	102	114	125	12.7	22.4	4.85	11.9
7.94 x 57.0	1045782	2.86	7.85	57.0	74.5	89.0	16.0	28.7	6.35	14.2
7.94 x 108	1045808	6.71	7.85	108	125	140	16.0	28.7	6.35	14.2
9.53 x 63.5	1045826	8.53	9.65	63.5	83.5	101	19.1	35.1	7.85	16.8
9.53 x 114	1045844	11.3	9.65	114	134	152	19.1	35.1	7.85	16.8
12.7 x 82.5	1045862	15.0	12.7	82.5	108	130	25.4	44.5	9.65	23.1
12.7 x 152	1045880	22.7	12.7	152	178	200	25.4	44.5	9.65	23.1
15.9 x 102	1045906	31.2	16.0	102	135	164	31.8	57.0	12.7	28.4
15.9 x 152	1045924	34.0	16.0	152	186	214	31.8	57.0	12.7	28.4
19.1 x 114	1045942	57	19.1	114	154	189	38.1	70.0	15.7	35.1
19.1 x 152	1045960	68	19.1	152	192	227	38.1	70.0	15.7	35.1
22.2 x 127	1045988	91	22.4	127	174	215	44.5	82.5	19.1	39.6
25.4 x 152	1046022	135	25.4	152	205	253	51.0	95.5	22.4	46.0
25.4 x 229	1046040	193	25.4	229	282	329	51.0	95.5	22.4	46.0
31.8 x 203	1046068	297	31.8	203	266	323	63.5	114	25.4	58.0
31.8 x 305	1046086	323	31.8	305	368	425	63.5	114	25.4	58.0
38.1 x 381	1046102	646	38.1	381	457	527	76.0	140	31.8	70.0