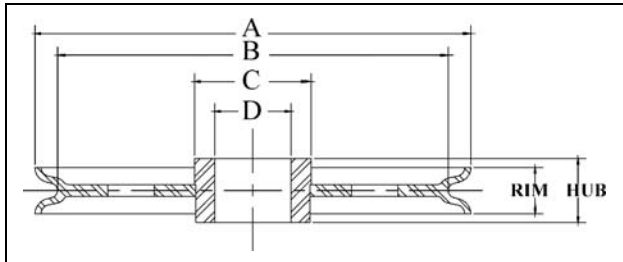


# McKissick® Sheaves



**SEE APPLICATION AND WARNING INFORMATION**  
 Para Español: [www.thecrosbygroup.com](http://www.thecrosbygroup.com) See Pages 342-349

## Finished Bore Sheaves

- Roll Forged™ sheaves are available in sizes up to 1829mm in diameter.
- McKissick® Finished Bore Sheaves can be equipped with bushings or bearings at an optional charge.
- 356mm diameter sheaves and larger are Roll Forged™ with Flame hardened grooves to minimum Rockwell 35C.

"A" Nominal Outside Diameter (mm)*	Stock No.	Pattern Number	Wire Line Size (mm)	"D" Bore Size (mm)	Hub Width (mm)	Rim Width (mm)	"C" Nominal Hub Outside Dia. (mm)	"B" Nominal Tread Dia. (mm)	Material	Approx. Weight (kg)
76.0	51008	3X	6	19.1	33.3	31.8	28.6	52.5	B.S.	0.45
76.0	11310	3X	10	19.1	33.3	31.8	28.6	52.5	B.S.	0.45
-	-	-	-	-	-	-	-	-	-	-
102	51053	4-1	3	39.9	25.4	22.2	51.0	79.5	B.S.	0.91
102	51044	4-1	6	39.9	25.4	22.2	51.0	79.5	B.S.	0.91
102	1189	4-1	10	39.9	25.4	22.2	51.0	79.5	B.S.	0.91
-	-	-	-	-	-	-	-	-	-	-
102	2023185	4-K	10	39.9	38.1	34.9	51.0	76.0	F.S.	1.59
102	2023182	4-K	13	39.9	38.1	34.9	51.0	76.0	F.S.	1.59
102	51026	4-K	16	39.9	38.1	34.9	51.0	76.0	F.S.	1.59
-	-	-	-	-	-	-	-	-	-	-
108	50553	4-E	10	20.7	30.2	23.8	54.0	85.5	B.S.	1.09
108	25939	4-E	13	20.7	30.2	23.8	54.0	85.5	B.S.	1.09
-	-	-	-	-	-	-	-	-	-	-
121	51222	5-2	8	22.2	39.7	34.9	38.1	92.0	D.I.	1.59
121	51231	5-2	10	22.2	39.7	34.9	38.1	92.0	D.I.	1.59
121	11622	5-2	13	22.2	39.7	34.9	38.1	92.0	D.I.	1.59
-	-	-	-	-	-	-	-	-	-	-
124	2026411	5-1-B	10	44.4	31.8	28.6	57.0	103	F.S.	1.63
124	62149	5-1-B	10	46.9	33.3	28.6	57.0	103	F.S.	1.13
124	2026413	5-1-B	13	44.4	31.8	28.6	57.0	103	F.S.	1.63
124	2026409	5-1-B	16	44.4	31.8	28.6	57.0	103	F.S.	1.63
-	-	-	-	-	-	-	-	-	-	-
127	51071	5-1	8	28.6	25.4	22.2	38.1	102	F.S.	1.13
127	51062	5-1	10	28.6	25.4	22.2	38.1	102	F.S.	1.13
127	25948	5-1	11	28.6	25.4	22.2	38.1	102	F.S.	1.13
-	-	-	-	-	-	-	-	-	-	-
133	2026426	6-6	16	39.8	38.1	34.9	52.3	98.4	F.S.	1.81
133	2026422	6-6	19	39.8	38.1	34.9	52.3	98.4	F.S.	1.81
-	-	-	-	-	-	-	-	-	-	-
149	2023133	6-2	16	47.6	44.5	41.3	63.5	111	F.S.	2.72
149	2023136	6-2	19	47.6	44.5	41.3	63.5	111	F.S.	2.72
149	51302	6-2	22	47.6	44.5	41.3	63.5	111	F.S.	2.72
-	-	-	-	-	-	-	-	-	-	-
152	51124	6-1-B	10	41.3	28.6	25.4	57.0	125	F.S.	1.81
152	51375	6-8	13	34.9	38.1	31.8	79.5	121	B.S.	3.18
152	13014	6-1-B	13	41.3	28.6	25.4	57.0	125	F.S.	1.81
152	60695	6-8	13	60.5	44.5	31.8	79.5	121	F.S.	2.13
152	2023263	6NS-2	16	63.5	58.5	55.5	79.5	108	F.S.	4.31
152	1410	6-8	19	34.9	38.1	31.8	79.5	121	B.S.	3.18
152	2023257	6NS-2	19	63.5	58.5	55.5	79.5	108	F.S.	4.31
152	2023261	6NS-2	22	63.5	58.5	55.5	79.5	108	F.S.	4.31
-	-	-	-	-	-	-	-	-	-	-
178	61872	7-1	6	46.9	33.3	19.1	60.5	159	B.S.	1.81
178	51437	7-1	6	47.6	34.9	19.1	60.5	159	B.S.	2.81
178	3203	7-1	10	47.6	34.9	19.1	60.5	159	B.S.	2.81
-	-	-	-	-	-	-	-	-	-	-
191	2026452	8-7	16	39.9	38.1	34.9	52.5	176	F.S.	3.40
191	2026450	8-7	19	39.9	38.1	34.9	52.5	176	F.S.	3.40
-	-	-	-	-	-	-	-	-	-	-
194	51605	8-10	10	39.9	38.1	31.8	60.5	157	D.I.	3.18
194	5498	8-10	13	39.9	38.1	31.8	60.5	157	D.I.	3.18

McKissick Sheaves