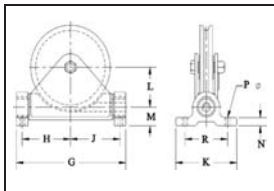


# Western Lead Blocks

**SEE APPLICATION AND WARNING INFORMATION**  
 Para Español: [www.thecrosbygroup.com](http://www.thecrosbygroup.com) On Pages 342-349

G-602-S



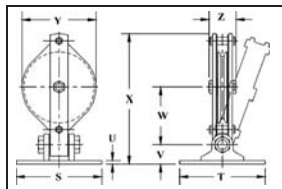
## Flag Blocks

- Base plates are drilled.
- Available painted or galvanized.
- Fitted with steel sheaves.
- Self-lubricated Bronze Bushed.

Sheave Diameter (mm)	602 Series Stock No.		Resultant Working Load Limit (t)*	Wire Rope Size (mm)	Weight Each (kg)	Dimensions (mm)								
	S-602-S Painted	G-602-S Galv.				G	H	J	K	L	M	N	P	R
152	772391	772408	1.81	10	7.71	229	95.5	98.5	159	73.0	41.1	19.1	14.2	121
203	1420885	772426	2.27	13	14.3	289	121	130	178	92.0	51.0	25.4	17.5	140
254	772435	772444	2.72	16	19.1	340	145	154	178	117	51.0	25.4	17.5	140
305	772453	772462	3.63	19	52	438	184	197	273	137	79.0	35.1	20.6	191
356	772471	-	4.54	22	62	489	216	222	273	165	79.0	35.1	20.6	191

\* Ultimate Load is 4 times the Resultant Working Load Limit.

S-603-S



## Hinged Lead Blocks

- Base plates are not drilled.
- Available painted or galvanized.
- Self-lubricated Bronze Bearings.

Sheave Diameter (mm)	603 Series Stock No.		Resultant Working Load Limit (t)*	Wire Rope Size (mm)	Weight Each (kg)	Dimensions (mm)							
	S-603-S Painted	G-603-S Galv.				S	T	U	V	W	X	Y	Z
152	772596	772603	1.81	10	13.6	152	114	12.7	51.0	148	325	171	82.5
203	772612	772621	2.27	13	15.4	203	171	9.65	66.5	167	393	229	95.5
254	772630	772649	2.72	16	20.4	305	305	12.7	70.0	203	464	273	111
305	772658	772667	3.63	19	34.0	305	305	12.7	70.0	241	473	330	116
356	772676	772685	4.54	22	45.4	305	305	12.7	70.0	273	524	381	122

\* Ultimate Load is 4 times the Resultant Working Load Limit.