

# McKissick® Horizontal & Vertical Sheaves

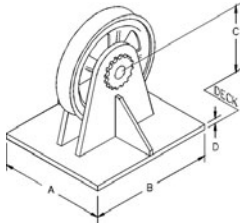


**SEE APPLICATION AND WARNING INFORMATION**

Para Español: [www.thecrosbygroup.com](http://www.thecrosbygroup.com)

On Pages 342-349

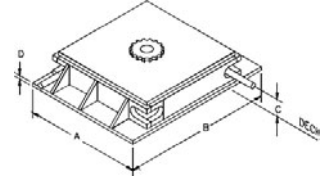
## 461 VERTICAL LEAD SHEAVES



Furnish the following important information when ordering:

- A, B, and C dimensions.
- Line pull in pounds and degree of wrap.
- Line speed.
- Diameter of wire rope.
- Roller bearings, bronze bushings, or sealed double row tapered bearings.

## 463 HORIZONTAL LEAD SHEAVES



Guide and control your deck lines with McKissick's deck-mounted wire rope sheaves.

**Built to your specific requirements.**

- Extra heavy construction, built to withstand breaking strength of indicated rope (XIP, IWRC).
- Flame-hardened sheaves, machined grooves for proper rope size.
- For special requirements, contact Crosby.

Figure No.	Lead Sheave Stock No.	Sheave Diameter (mm)	Standard Wire Rope Size (mm)	Weight Each (kg)	Dimensions (mm)			
					A	B	C	D
461-18	239753	457	22	227	305	508	279	38.1
461-24	131574	610	32	227	381	660	356	38.1
461-26	238120	660	38	299	406	711	381	38.1
461-36	148389	914	42	386	508	914	495	50.8
461-40	136285	1016	50	910	584	1067	572	50.8
461-42	130753	1067	64	1814	711	1321	648	63.5
463-26	4440359	660	26	448	838	838	95.5	38.1
463-30	1404377	762	32	556	940	940	89.0	38.1
463-36	146522	914	38	862	1092	1092	89.0	38.1
463-42	1406525	1067	44	1350	1270	1270	111	51.0
463-48	131583	1219	50	1630	1397	1397	118	51.0
463-60	123164	1524	64	2900	1727	1727	146	51.0

## 457



## Deck Mounted Anchor Fairleader

- Barrel and sheaves equipped with sealed double row tapered bearings.
- Extra heavy construction, built to withstand breaking strength of indicated rope at 90 degree sheave wrap and 45 degree head swing.
- All bearings Alemite-lubricated.
- Custom Anchor Fairleader sets available.

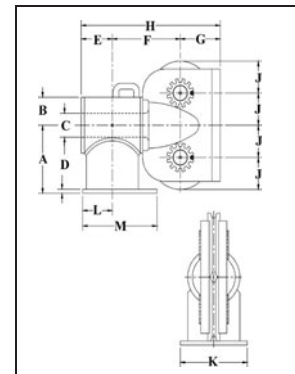


Figure No.	457 Stock No.	Sheave Diameter (mm)	Wire Rope Size (mm)	Weight Each (kg)	Dimensions (mm)											
					A	B	C	D	E	F	G	H	J	K	L	M
B-10-D	8073880	254	26	136	273	114	89.0	19.1	127	257	171	556	129	241	114	279
B-12-D	8073924	305	32	272	324	127	127	19.1	162	314	203	679	154	279	133	330
B-16-D	8073979	406	38	590	432	178	152	25.4	214	451	273	938	205	457	203	508
B-20-D	8074022	508	44	1134	533	229	216	25.4	286	557	324	1167	256	533	254	622
B-24-D	8074111	610	52	1633	641	279	254	31.8	324	673	375	1372	306	584	279	686