

# Crosby® Hook Latch Kits



**SEE APPLICATION AND WARNING INFORMATION**

Para Español: [www.thecrosbygroup.com](http://www.thecrosbygroup.com) On Pages 129 - 130

## PL LATCH KITS



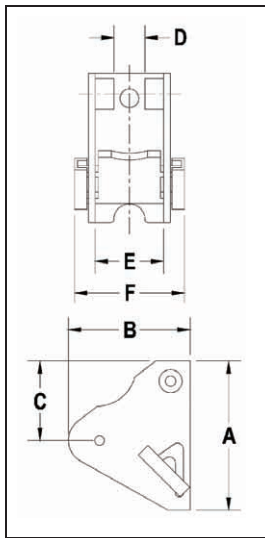
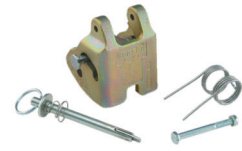
PL LATCH

## LATCH ORDERING INSTRUCTIONS

1. Specify PL, PL-N or PL-O latch kit stock number from charts below.
2. Specify capacity of hook to which latch will be assembled.
3. Specify hook material (carbon or alloy).

NOTE: The PL latch will not work on 319N, 320N or 322N hooks. The PL-N/O latches, in the sizes available, will work on both the old style and new style hooks.

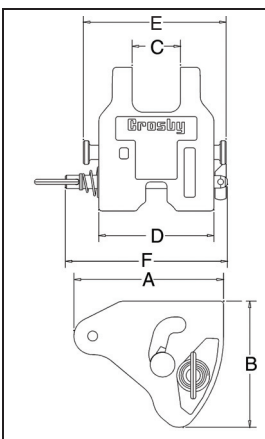
## PL-N/O LATCH KITS



### PL Latch Kits

- Hot dip galvanized.
- Heavy duty latch with easy operating features.
- Flapper lever indicates locked or unlocked position.
- Assembly instructions included with each latch.
- For additional dimensional data on eye, shank or swivel hooks refer to pages 92 through 97 in this section.
- Meets the intent of OSHA Rule 1926.550 (g) (when secured with the bolt, nut and pin) for lifting personnel.

Hook Size (t)		Hook ID Code	PL Latch Kit Stock No.	Weight Each (kg)	Dimensions (mm)					
Carbon	Alloy				A	B	C	D	E	F
3.2	5.4	I	1093711	.24	65.5	59.5	49.3	14.2	28.7	51.0
5	8	J	1093712	.30	76.0	59.5	51.0	16.0	35.1	56.5
7.5	11.5	K	1093713	.45	92.0	70.5	60.5	16.0	41.4	60.5
10	16	L	1093714	.57	102	82.0	68.5	16.0	47.8	86.0
15	22	N	1093715	1.34	135	102	74.0	21.3	60.5	87.5
20	31.5	O	1093716	1.84	152	113	81.0	26.9	73.0	108
25	37	P	1093717	3.91	178	168	103	57.0	114	155
30	45	S	1093718	4.54	171	178	102	57.0	121	162
40	60	T	1093719	6.49	203	195	111	88.0	140	184
50	75	U	1093720	12.2	251	208	130	86.0	165	226
-	100-150	W - X	1093721	15.1	276	281	162	86.0	191	254
-	200	Y	1093723	20.4	302	284	162	86.0	222	286
-	300	Z	1093724	24.9	318	310	203	86.0	248	330



### PL-N/O Latch Kits

- Heavy duty latch with easy operating features.
- PL-N designed for Crosby 319N & 320N style hooks, PL-O designed for Crosby 319 & 320 old style hooks.
- Flapper lever indicates locked or unlocked position.
- Assembly instructions included with each latch.
- For additional dimensional data on eye, shank or swivel hooks refer to pages 92 through 97 in this section.
- Meets the intent of OSHA Rule 1926.550 (g) (when secured with the supplied toggle pin) for lifting personnel.

Hook Size (t)		Hook ID Code	PL-N Stock No.	PL-O Stock No.	Weight Each (kg)	Dimensions (mm)					
Carbon	Alloy					A	B	C	D	E	F
3.2	5.4	I	1092000	1091900	.36	60.9	51.0	21.1	54.1	68.8	87.4
5	8	J	1092001	1091901	.58	74.7	63.5	25.4	64.0	81.0	97.3
7.5	11.5	K	1092002	1091902	.90	92.2	76.7	30.2	69.9	87.4	111
10	16	L	1092003	1091903	1.27	102	86.1	34.0	81.0	102	114
15	22	N	1092004	1091904	2.22	132	110	40.9	98.0	122	130

\* "N" style hooks are rated at 5 tonnes.