

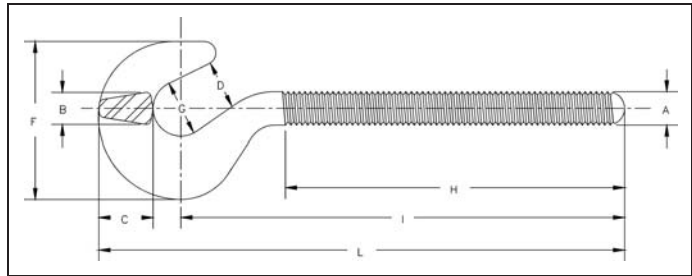
# Turnbuckle - Hook End Fittings



**Fatigue Rated\***

## HOOK END FITTINGS

- Quenched and Tempered.
- Hot Dip galvanized steel.
- Hooks are forged with a greater cross sectional area that results in a stronger hook with better fatigue properties.
- Modified UNJ thread for improved fatigue properties.
- Fatigue Rated.



## HG-4037 Hook End Fittings

Shank Diameter & Take Up (mm)	RH Hook Stock No.	LH Hook Stock No.	Working Load Limit (t)	Weight Each (kg)	Dimensions (mm)								
					A	B	C	D	F	G	H	I	L
* 6.35 x 102	1070012	1070539	.18	.04	6.35	6.35	10.4	11.2	32.3	12.7	65.8	87.4	104
* 7.94 x 114	1070030	1070557	.32	.07	7.94	7.87	12.7	12.7	38.1	14.2	76.2	102	122
* 9.53 x 152	1070058	1070575	.45	.12	9.53	9.65	15.5	14.2	44.7	15.7	98.6	127	150
12.7 x 152	1070076	1070593	.68	.27	12.7	12.7	19.8	16.5	57.9	20.8	106	157	187
12.7 x 305	1070110	1070637	.68	.34	12.7	12.7	19.8	16.5	57.9	20.8	183	233	264
15.9 x 305	1070138	1070655	1.02	.48	15.9	16.0	25.4	22.9	71.4	25.4	113	171	210
15.9 x 305	1070174	1070691	1.02	.59	15.9	16.0	25.4	22.9	71.4	25.4	189	248	286
19.1 x 152	1070192	1070717	1.36	.61	19.1	19.1	30.7	24.9	84.6	28.4	116	189	234
19.1 x 305	1070236	1070753	1.36	.97	19.1	19.1	30.7	24.9	84.6	28.4	192	265	310
19.1 x 457	1070254	1070771	1.36	1.14	19.1	19.1	30.7	24.9	84.6	28.4	268	341	386
22.2 x 305	1070272	1070799	1.81	1.42	22.2	22.4	34.8	28.7	96.0	32.0	198	283	334
22.2 x 457	1070290	1070815	1.81	1.64	22.2	22.4	34.8	28.7	96.0	32.0	275	359	410
25.4 x 152	1070316	1070833	2.27	1.80	25.4	25.4	38.9	31.8	108	35.1	129	225	281
25.4 x 305	1070334	1070851	2.27	2.14	25.4	25.4	38.9	31.8	108	35.1	205	301	357

\* Mechanical Galvanized